

## ■ BM-20plus | PORTABLE BEVELLER

BM-20plus is an easy-to-use, portable heavy-duty machine designed for beveling steel plates and pipes prior to welding.

The machine is fitted with two rotary milling heads, each holding five 4-sided indexable inserts, allowing smooth operation and exceptional efficiency.

BM-20plus has a state of the art electronic motor overload module protecting the operator, the machine and the tooling.

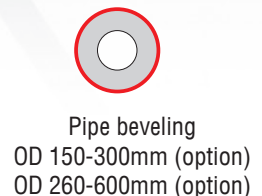
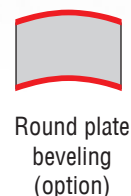
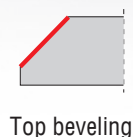
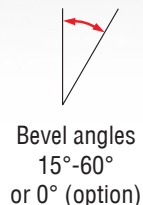
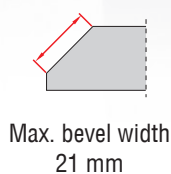
It is equipped with guide rolls, which make it easy and light to operate.

### ■ Features:

- Portable, heavy-duty machine
- Equipped with guide rolls for easy operation
- Automatic motor overload protection
- Fitted with two milling heads for smooth and efficient operation
- Adjustable bevel angle, 15° - 60°



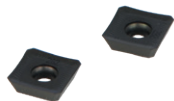
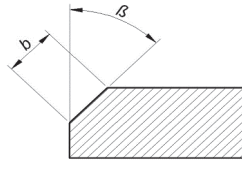
### ■ Applications



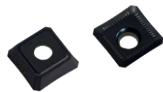
## BM-20plus TECHNICAL SPECIFICATION

Power supply	115V/60Hz or 230V/50Hz
Power	2.15 HP (1.6 kW) for 50 Hz 2.41 HP (1.8 kW) for 60 Hz
Spindle speed	2780–3340 rpm (at 230 V) 2740–3290 rpm (at 115 V)
Tooling	Two milling heads with 10 square cutting inserts
Maximum bevel width ( <i>b</i> )	21 mm (13/16") [drawing 1]
Bevel angle ( $\beta$ )	15–60° [drawing 1]; 0° (option)
Weight	20.5 kg (45 lbs)
Part number	UKS-0539-10-20-00-0 (230V/50Hz) UKS-0539-10-10-00-0 (115V/60Hz)

$\beta$	15°	30°	45°	60°
<i>b</i>	21 mm	20.5 mm	21 mm	20.5 mm

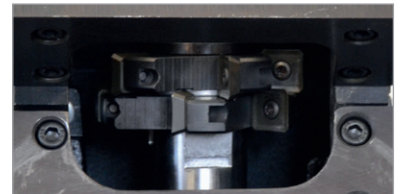
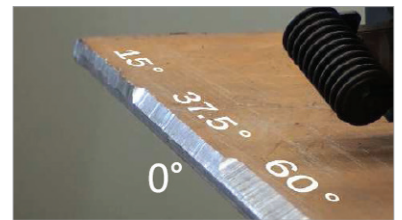


Cutting Insert (1 piece),  
sold 10pcs/box  
Product code: PLY-000282



Cutting Insert HD (1 piece),  
sold 10pcs/box  
Product code: PLY-000591

Drawing 1  
Maximum bevel width  
depending on the angle



2 rotary milling heads, each holding  
five 4-sided indexable inserts



Plate beveling



Plate facing-off (option)



Round plate beveling (option)



Pipe beveling (option)

### Optional accessories:

#### Pipe beveling attachments:



Facing off attachment (0°)  
(enables beveling at zero degree)  
Product code: ZSP-0075-32-00-00-1



150-300mm (6" - 12")  
Product code: ZSP-0075-31-00-00-0



260-600mm (10" - 24")  
Product code: ZSP-0075-31-00-00-1



Round plate beveling attachment:  
Minimal outer radius R=1000 mm (40")  
Minimal inner radius R=1000 mm (40")  
Max bevel width 19 mm  
Product code: ZSP-0539-10-00-00-0



PROMOTECH Sp. z o.o.  
ul. Elewatorska 23/1, 15-620 BIAŁYSTOK, POLAND  
tel. (+48 85) 678 34 05, fax (+48 85) 662 78 77  
marketing@promotech.eu www.promotech.eu

Find us on



Your local dealer:

